

# Product Handbook for Metric Standard Steel Lockers

## Section D - Standard Locker Configurations

### Five-Tier Locker

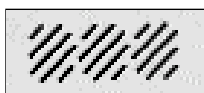
Overall Dimensions (mm, overall)			Nesting Availability		
Height	Width	Depth	Initial	Nest 2	Nest 3
1800	225*	450	●	●	●
1800	225*	500	●	●	●
1800	300	300	●	●	●
1800	300	450	●	●	●
1800	400	450	●	●	-
1800	450	450	●	●	-

\* Slimline Lockers, also available in nests of 4

§ Shaded items available on special reduced lead-time delivery (in standard colours).

Check current price lists for availability.

**Product identification (front vent style):**



Metric Series

**Internal fittings:**

● four fixed intermediate shelves

**Standard lock fitting:**

key operated deadlocks providing single-point locking. Supplied with two keys.

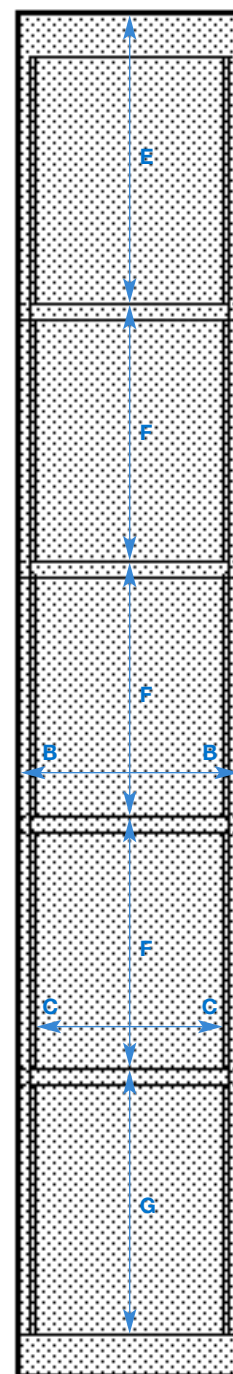
**Door/compartment identification:**

none supplied as standard.

Number plates are available separately - refer to page F1 for details.

**Example weights in kg:**

	Nest 1	Nest 2	Nest 3
300 x 450	20.2	37.5	54.5
400 x 450	25	45.5	-



**A** = overall width

**BB** = internal width (overall width -3mm)

**CC** = clear opening

225mm (overall width) = 175mm clear

300mm (overall width) = 250mm clear

400mm (overall width) = 350mm clear

450mm (overall width) = 400mm clear

**D** = overall depth

(internal depth is overall depth -21mm)

**E** = top compartment height: 385mm

**F** = intermediate compartment heights:  
334mm